

2 WEST ELEVATION
1/8" = 1'-0"



1 SOUTH ELEVATION
1/8" = 1'-0"





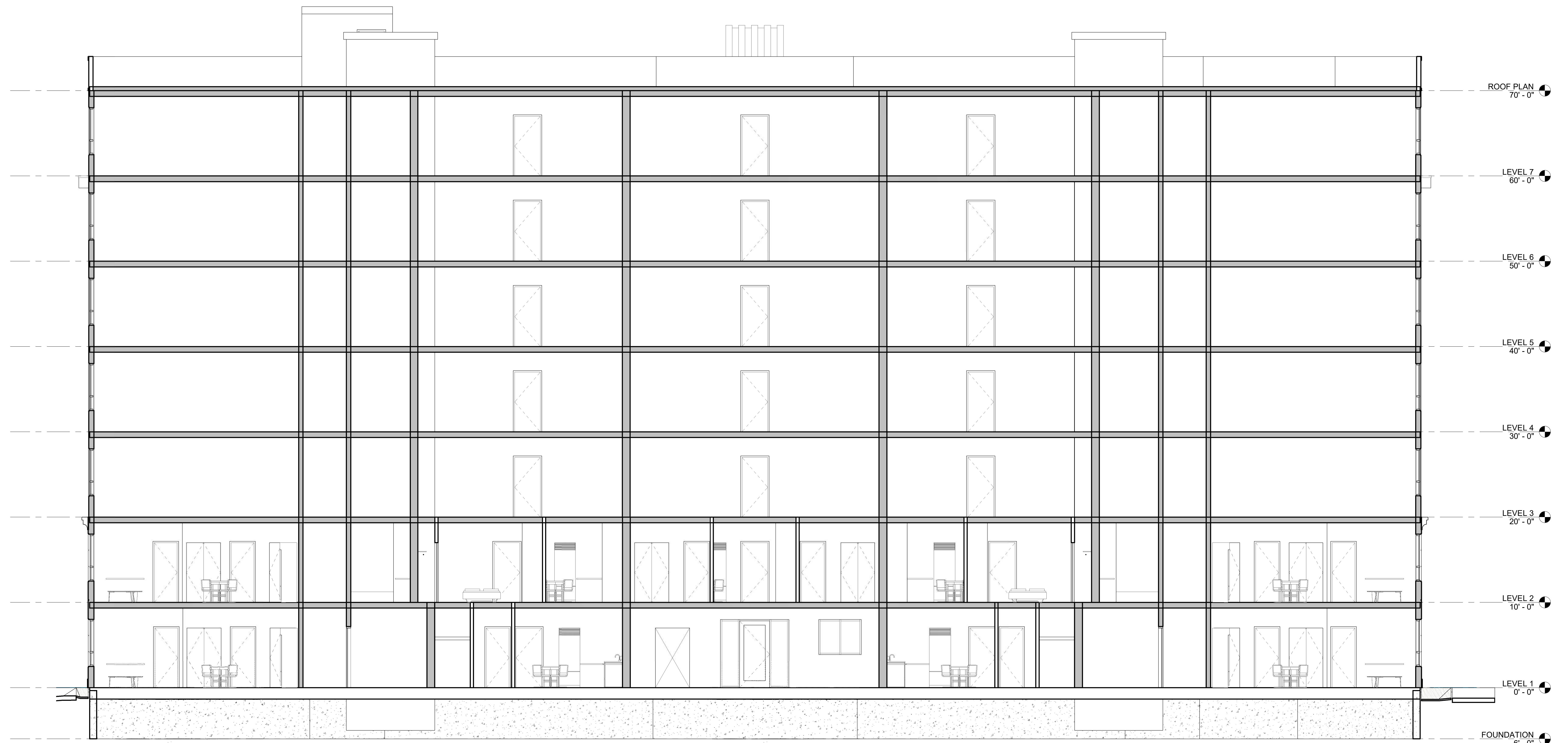
2 EAST ELEVATION
1/8" = 1'-0"



3 NORTH / EAST CORNER
1/8" = 1'-0"



1 NORTH ELEVATION
1/8" = 1'-0"



8 SEPT. 2023

48 MASON ST

BUILDING LONGITUDINAL SECTION

DD-300

LYFarchitects
 ARCHITECTURE + LAND PLANNING + CONSTRUCTION MANAGEMENT
 One Elm Square | Andover | MA | 01810
 (978)470.3675 | www.LYFarchitects.com

10/10/2023 10:48:12 AM - 48 Mason St Building Longitudinal Section - DD-300.rvt